

I RICAMBI NON DISPONIBILI POTREBBERO ESSERE STATI SOSTITUITI - SPARE PARTS NOT AVAILABLE COULD HAVE BEEN REPLACED**0,00**

| # | Tipo Type Type Type Tipo | Codice Code Code Kode Codigo | DESCRIZIONE | Description Description Beschreibung Descripción | consigliati recommended | Not Available | PREZZO PRICE PRIX PREISE PRECIO "*****" EURO |
|---|--------------------------------------|--|---|---|----------------------------|---------------|--|
| 1 | iF 30 | 72003170 | CARTER RULLI INFERIORI L=365 | Bottom rollers case - Carter rouleaux inférieurs - Untere Rollenschutz - Cáster rodillos inferiores | | | 156,00 |
| 1 | iF 40 | 72004140 | CARTER RULLI INFERIORI L=485 | Bottom rollers case - Carter rouleaux inférieurs - Untere Rollenschutz - Cáster rodillos inferiores | | | 167,00 |
| 2 | | 74600140 | PEDALE AZIONAMENTO | Pedal - Pédale - Pedal - Pedal | | | 113,00 |
| 3 | | 74600150 | SCHEDA ELETTRICA IF 30/40/40P (M) | Control board - Panneau de commande - Steuerung - Panel de mandos | | | 237,00 |
| 4 | iF 30 | 72003180 | LAMIERINO CENTRALE SCORRIMENTO PASTA | Middle balance sheet sliding dough - Tôle fine centrale glissement pâte - Mittlere Teiggleitungsfeinblech - Lámina central escurrimiento masa | | | 136,00 |
| 4 | iF 40 | 72004150 | LAMIERINO CENTRALE SCORRIMENTO PASTA | Middle balance sheet sliding dough - Tôle fine centrale glissement pâte - Mittlere Teiggleitungsfeinblech - Lámina central escurrimiento masa | | | 136,00 |
| 5 | iF 30 | 72003190 | CARTER RULLI SUPERIORI L=232 (Configurazione 1) | Top rollers case - Carter rouleaux supérieurs - Obere Rollenschutz - Cáster rodillos superiores | | | 233,00 |
| 5 | iF 40 | 72004160 | CARTER RULLI SUPERIORI L=282 | Top rollers case - Carter rouleaux supérieurs - Obere Rollenschutz - Cáster rodillos superiores | | | 233,00 |
| 6 | | 74500280 | ETICHETTA ADES. QUADRO ELETTRICO IF 30/40/40P | Label control panel - Etiquette-panneau de control - Etikett-Schalltafel - Tarjeta-panel de mando | | | 43,40 |
| 8 | iF 30 | 72003250 | SCIVOLO SUPERIORE SCORRIMENTO PASTA | Top dough slide - Glissière supérieure pâte - Obere Teigrutsche - Rampa masa superior | | | 69,00 |
| 8 | iF 40 | 72004170 | SCIVOLO SUPERIORE SCORRIMENTO PASTA | Top dough slide - Glissière supérieure pâte - Obere Teigrutsche - Rampa masa superior | | | 69,00 |
| 9 | iF 30 | 72003270 | TELAIO INOX IF/30 | Inox frame - Châssis en inox - Gestell aus Edelstahl - Bastidor de acero inoxidable | | | 914,00 |

I RICAMBI NON DISPONIBILI POTREBBERO ESSERE STATI SOSTITUITI - SPARE PARTS NOT AVAILABLE COULD HAVE BEEN REPLACED**0,00**

| # | Tipo Type Type Type Tipo | Codice Code Code Kode Codigo | DESCRIZIONE | Description Description Beschreibung Descripción | consigliati recommended | Not Available | PREZZO PRICE PRIX PREISE PRECIO "*****" EURO |
|----|--------------------------------------|--|--|---|----------------------------|---------------|--|
| 9 | iF 40 | 72004180 | TELAIO INOX IF/40 | Inox frame - Châssis en inox - Gestell aus Edelstahl - Bastidor de acero inoxidable | | | 1017,00 |
| 10 | | 72003300 | DISTANZIALE SUPPORTO BILANCIERE | Rocker arm spacer support - Entretoise support balancier - Schwinghebelhalterung Distanzstück - Espaciador soporte balancín | | | 11,40 |
| 11 | iF 30 | 72003310 | SCIVOLO ACCOMPAGNAMENTO PASTA | Dough driving slide - Glissière accompagnement pâte - Begleitungsteigsrutsche - Rampa acompañamiento masa | | | 22,40 |
| 11 | iF 40 | 72004190 | LAMIERINO ACCOMPAGNAMENTO PASTA | Dough driving sheet - Tôle accompagnement pâte - Begleitungsteigsfeinblech - Lámina acompañamiento masa | | | 22,40 |
| 12 | | 73800050 | PULEGGIA MOTORE 75/2 F.14 H=25 | Motor pulley - Poulie moteur - Motorsscheibe - Polea motor | | | 56,00 |
| 13 | | 73800060 | PULEGGIA RULLI 95/2 F.14 H=25 (con sfettatura) | Rollers pulley - Poulie rouleaux - Rollerscheibe - Polea rodillos | | | 56,00 |
| 14 | iF 30 | 73800110 | CINGHIA SUPERIORE IF/30 D. 8x725 | Top belt - Courroie supérieure - Oberer Riemen - Correa superior | X | | 35,10 |
| 14 | iF 40 | 73800240 | CINGHIA SUPERIORE DIAM. 8 X 933 | Top belt - Courroie supérieure - Oberer Riemen - Correa superior | X | | 35,10 |
| 15 | | 74001110 | MOTORE MEC 71/4 B5 Kw.0,37 volt. 230/50 | Motor - Moteur - Motor - Motor | | | 552,00 |
| 16 | iF 30 | 72003370 | CARTER POSTERIORE IF/30 | Back frame - Carter postérieur - Rückschutz - Cártier posterior | | | 156,00 |
| 16 | iF 40 | 72004200 | CARTER POSTERIORE IF 40-40P | Back frame - Carter postérieur - Rückschutz - Cártier posterior | | | 156,00 |
| 17 | | 72100800 | VCE M5x10 ZN | VCE M5x10 ZN - VCE M5x10 ZN - VCE M5x10 ZN - VCE M5x10 ZN | | | 0,00 |

I RICAMBI NON DISPONIBILI POTREBBERO ESSERE STATI SOSTITUITI - SPARE PARTS NOT AVAILABLE COULD HAVE BEEN REPLACED**0,00**

| # | Tipo Type Type Type Tipo | Codice Code Code Kode Codigo | DESCRIZIONE | Description Description Beschreibung Descripción | consigliati recommended | Not Available | PREZZO PRICE PRIX PREISE PRECIO "*****" EURO |
|----|--------------------------------------|--|------------------------------------|---|----------------------------|---------------|--|
| 18 | iF 30 | 72804500 | BILANCIERE PASTA | Rocker arm - Balancier - Vorrichtung zum Rundformen - Balancin | | | 22,40 |
| 18 | iF 40 | 72804560 | BILANCIERE PASTA | Rocker arm - Balancier - Vorrichtung zum Rundformen - Balancin | | | 27,70 |
| 19 | iF 30 | 73800140 | CINGHIA INFERIORE IF/30 D.8X640 | Bottom belt - Courroie inférieure - Unterer Riemen - Correa inferior | X | | 35,10 |
| 19 | iF 40 | 73800250 | CINGHIA INFERIORE DIAM. 8 X 750 | Bottom belt - Courroie inférieure - Unterer Riemen - Correa inferior | X | | 35,10 |
| 20 | | 72004130 | PIEDE SX | Left foot - Pieds gauche - Linker Fuß - Pie izquierdo | | | 77,00 |
| 21 | | 72804510 | GIUNTO CROCIERA FORO INT. D.20 | Joint cross - Joint croisillon - Kreuzbindung - Junto cruce | X | | 31,30 |
| 22 | iF 30 | 72004220 | POMELLO REGOLAZIONE BILANCINO | Dough rocker arm counterweight - Contrepoids balancier pâte - Teigsschwinghebelsgegengewicht - Contrapeso balancin masa | | | 22,40 |
| 22 | iF 40 | 72004210 | CONTRAPPESO BILANCIERE PASTA IF 40 | Dough rocker arm counterweight - Contrepoids balancier pâte - Teigsschwinghebelsgegengewicht - Contrapeso balancin masa | | | 22,40 |
| 23 | | 72003570 | PIEDE DX | Right foot - Pieds droit - Rechter Fuß - Pie derecho | | | 77,00 |
| 24 | | 72500330 | MOLLA DX SOSTEGNO RASCHIETTO | Right scraper spring - Ressort droit racloir - Rechter Kratzersfeder - Resorte derecho rescador | X | | 22,40 |
| 25 | | 72500340 | ANELLO ELASTICO ESTERNO (AAE) Ø 17 | Outer spring ring - Anneau ressort extérieur - Äußerer Springring - Anillo elástico exterior | X | | 2,80 |
| 26 | | 74500290 | INTERRUTTORE DI LINEA | Switch line - Interrupteur de ligne - Linieausschalter - interruptor de circuito | X | | 22,40 |

I RICAMBI NON DISPONIBILI POTREBBERO ESSERE STATI SOSTITUITI - SPARE PARTS NOT AVAILABLE COULD HAVE BEEN REPLACED**0,00**

| # | Tipo Type Type Type Tipo | Codice Code Code Kode Codigo | DESCRIZIONE | Description Description Beschreibung Descripción | consigliati recommended | Not Available | PREZZO PRICE PRIX PREISE PRECIO "*****" EURO |
|----|--------------------------------------|--|----------------------------------|---|----------------------------|---------------|--|
| 27 | | 72500440 | MOLLA SX SOSTEGNO RASCHIETTO | Left scraper spring - Réssort gauche racloir - Linker Kratzersfeder - Resorte izquierdo rescador | X | | 22,40 |
| 28 | | 72008910 | SUPPORTO SX RULLI INFERIORI | Left bottom rollers support - Support gauche rouleaux inférieurs - Linke Halterung der unterer Rollen - Soporte izquierdo rodillos inferiores | | | 142,00 |
| 30 | iF 30 | 72602090 | RULLO MOBILE INF. DIAM. 48 L=300 | Bottom movable roller - Rouleau mobile inférieur - Bewegliche untere Rolle - Rodillo móvil inferior | | | 223,00 |
| 30 | iF 40 | 72602100 | RULLO MOBILE INF. DIAM. 48 L=420 | Bottom movable roller - Rouleau mobile inférieur - Bewegliche untere Rolle - Rodillo móvil inferior | | | 245,00 |
| 31 | iF 30 | 72804580 | RASCHIETTO DX. IF 30 | Right scraper - Racloir droit - Rechter Kratzer - Rescador derecho | | | 56,00 |
| 31 | iF 40 | 72004230 | RASCHIETTO DX IF/40-40P | Right scraper - Racloir droit - Rechter Kratzer - Rescador derecho | | | 56,00 |
| 32 | iF 30 | 72804530 | RASCHIETTO SX IF 30 | Left scraper - Racloir gauche - Linker Kratzer - Rescador izquierdo | | | 56,00 |
| 32 | iF 40 | 72004240 | RASCHIETTO SX IF/40-40P | Left scraper - Racloir gauche - Linker Kratzer - Rescador izquierdo | | | 56,00 |
| 33 | | 72601790 | SEGMENTO LAMELLARE | Lamellar part - Segment lamellaire - Lamellensegment - Segmento laminar | | | 27,70 |
| 34 | iF 30 | 72008920 | ALBERO ECCENTRICO INF. L=376 | Outer shaft - Arbre extérieur - Äussere Kardanwelle - Eje externo | | | 161,00 |
| 34 | iF 40 | 72008930 | ALBERO ECCENTRICO INF. L=496 | Bottom outer shaft - Arbre extérieur inférieur - Äussere untere Kardanwelle - Eje externo inferior | | | 187,00 |
| 35 | | 72804540 | CROCIERA | Cross - croisillon - Kreuz - Cruce | | | 22,40 |

I RICAMBI NON DISPONIBILI POTREBBERO ESSERE STATI SOSTITUITI - SPARE PARTS NOT AVAILABLE COULD HAVE BEEN REPLACED**0,00**

| # | Tipo Type Type Type Tipo | Codice Code Code Kode Codigo | DESCRIZIONE | Description Description Beschreibung Descripción | consigliati recommended | Not Available | PREZZO PRICE PRIX PREISE PRECIO "*****" EURO |
|----|--------------------------------------|--|--|--|----------------------------|---------------|--|
| 36 | | 71900230 | INGRANAGGIO DESTRO (RULLO ECCENTRICO) | Right gear (roller) - Engrenage droit (rouleau) - Rechtes Getriebe (Rolle) - Engranaje derecho (rodillo) | | | 97,00 |
| 37 | | 73800290 | CUSCINETTO 6003 2RS | Bearing - Coussinet - Kugellager - Cojinete | | | 11,40 |
| 38 | | 72601800 | TAPPO IN PLASTICA | Plastic plug - Bouchon en plastique - Plastikverschluss - Tapón de plástico | | | 11,40 |
| 39 | | 71901120 | VITE DI TRASMISSIONE | Transmission screw - Vis de transmission - Antriebschraube - Tornillo de transmisión | | | 193,00 |
| 40 | | 72003620 | LEVA REGOLAZIONE RULLI COMPLETA | Rollers space regulation lever - Levier régulation distance rouleaux - Reglerungshebel von Rollendistanz - Palanca regulación distancia rodillos | | | 52,00 |
| 41 | iF 30 | 72500920 | SPINETTA ELASTICA 3 x 20 | Spring pin - Epine ressort - Springstift - Vástago elástico | X | | 4,10 |
| 42 | | 72008940 | SUPPORTO DX TRASMISSIONE RULLI INFERIORI | Right bottom rollers transmission support - Support droit transmission rouleaux inférieurs - Rechte Antriebshalterung von unteren Rollen - Soporte derecho transmisión rodillos inferiores | | | 223,00 |
| 43 | | 71901130 | INGRANAGGIO SINISTRO (RULLO FISSO DI.25) | Left gear (fixed roller) - Engrenage gauche (rouleau fixe) - Linkes Getriebe (unbewegliche Rolle) - Engranaje izquierdo (rodillo fijo) | | | 97,00 |
| 44 | iF 30 | 72008950 | ALBERO FISSO INFERIORE L=358 | Bottom fixed shaft - Arbre fixe inférieur - Untere Kardanwelle - Eje fijo inferior | | | 65,00 |
| 44 | iF 40 | 72008960 | ALBERO FISSO INFERIORE L=478 | Bottom fixed shaft - Arbre fixe inférieur - Untere Kardanwelle - Eje fijo inferior | | | 77,00 |
| 45 | | 72008970 | SUPPORTO SX RULLI SUPERIORI | Left top rollers support - Support gauche rouleaux supérieurs - Linke Halterung der oberen Rollen - Soporte izquierdo rodillos superiores | | | 142,00 |
| 47 | iF 30 | 72008990 | ALBERO FISSO SUPERIORE L=223 | Upper fixed shaft - Arbre fixe supérieur - Obere unbewegliche Kardanwelle - Eje fijo superior | | | 65,00 |

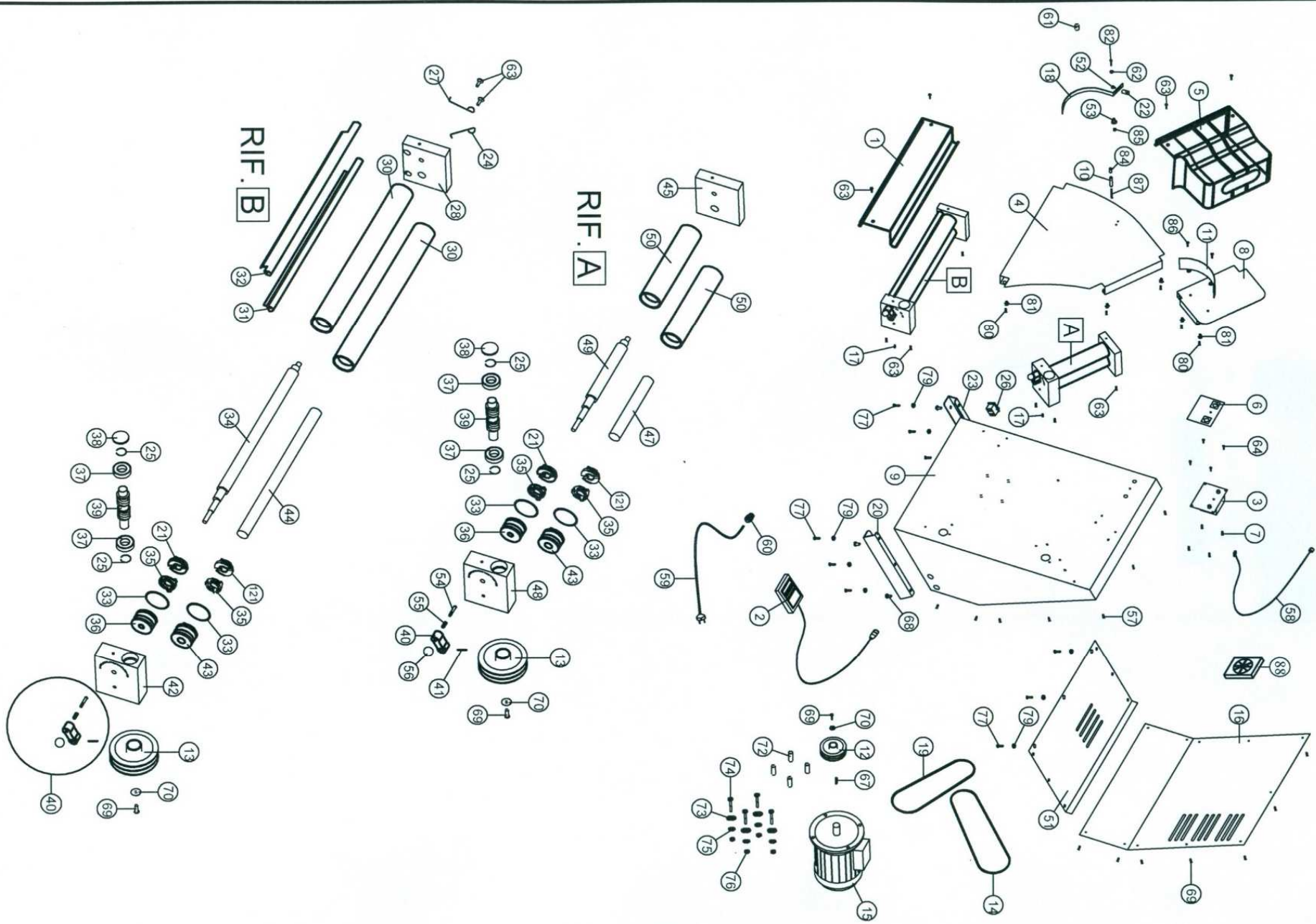
I RICAMBI NON DISPONIBILI POTREBBERO ESSERE STATI SOSTITUITI - SPARE PARTS NOT AVAILABLE COULD HAVE BEEN REPLACED**0,00**

| # | Tipo Type Type Type Tipo | Codice Code Code Kode Codigo | DESCRIZIONE | Description Description Beschreibung Descripción | consigliati recommended | Not Available | PREZZO PRICE PRIX PREISE PRECIO "*****" EURO |
|----|--------------------------------------|--|--|--|----------------------------|---------------|--|
| 47 | iF 40 | 72009000 | ALBERO FISSO SUPERIORE L=273 | Upper fixed shaft - Arbre fixe supérieur - Obere Kardanwelle - Eje fijo superior | | | 77,00 |
| 48 | | 72009020 | SUPPORTO DX TRASMISSIONE RULLI SUPERIORI | Right upper rollers transmission support - Support droit transmission rouleaux supérieurs - Rechte Antriebshalterung von oberen Rollen - Soporte derecho transmisión rodillos superiores | | | 223,00 |
| 49 | iF 30 | 72009040 | ALBERO ECCENTRICO SUPERIORE L=243 | Upper outer shaft - Arbre extérieur supérieur - Äussere obere Kardanwelle - Eje externo superior | | | 161,00 |
| 49 | iF 40 | 72009050 | ALBERO ECCENTRICO SUPERIORE L=291 | Upper outer shaft - Arbre extérieur supérieur - Äussere obere Kardanwelle - Eje externo superior | | | 174,00 |
| 50 | iF 30 | 72602140 | RULLO MOBILE SUPERIORE DIAM.48 L=165 | Upper movable roller - Rouleau mobile supérieur- Bewegliche obere Rolle - Rodillo móvil superior | | | 215,00 |
| 50 | iF 40 | 72602150 | RULLO MOBILE SUPERIORE DIAM.48 L=215 | Upper movable roller - Rouleau mobile supérieur- Bewegliche obere Rolle - Rodillo móvil superior | | | 223,00 |
| 51 | iF 30 | 72004070 | BASE TELAIO IF/30 | Frame base - Base châssis - Grundlage des Gestells - Base bastidor | | | 56,00 |
| 51 | iF 40 | 72004300 | BASE TELAIO IF 40-40P | Frame base - Base châssis - Grundlage des Gestells - Base bastidor | | | 69,00 |
| 53 | | 72004090 | BOCCOLA NYLON BILANCIERE | Nylon rocker arm bush - Douille balancier nylon - Schwinghebelsbüchse aus Nylon - Anillo balancín de nylon | | | 7,70 |
| 57 | | 72501380 | RIVETTO FILETTATO M5 | Threaded rivet - Rivet fileté - Gewindeniet - Redoblón roscado | | | 4,10 |
| 58 | | 74800260 | CAVO DI COLLEGAMENTO SCHEDA - PEDALE | Control board/pedal connection cable - Câble de connexion panneau de commande/pédale - Steuerung-/Pedalsverbindungskabel - Cable de conexión tablero de mando/pedal | | | 4,10 |
| 59 | | 74800270 | CAVO CON SPINA | Cable with peg - Câble avec goupille - Kabel mit Stecker - Cable con enchufe | | | 43,40 |

I RICAMBI NON DISPONIBILI POTREBBERO ESSERE STATI SOSTITUITI - SPARE PARTS NOT AVAILABLE COULD HAVE BEEN REPLACED

0,00

| # | Tipo Type Type Type Tipo | Codice Code Code Kode Codigo | DESCRIZIONE | Description Description Beschreibung Descripción | consigliati recommended | Not Available | PREZZO PRICE PRIX PREISE PRECIO "*****" EURO |
|-----|--------------------------------------|--|---------------------------------------|---|----------------------------|---------------|--|
| 60 | | 71200010 | PRESSACAVO PG 11 (Completo di ghiera) | Cable stopping ring - Anneau blocage câble - Kabelsblockierungring - Anillo bloqueo cable | | | 11,40 |
| 72 | | 72007690 | DISTANZIALI (tubo d. 12-sp.2- l. 40) | Spacers - Pièces d'entretoisement - Distanzstücke - Espaciadores | | | 4,10 |
| 88 | | 72804550 | VENTOLA DI RAFFREDDAMENTO | Cooling fan - Ventilateur de refroidissement - Kühlgebläse - Ventilador de refrigeración | | | 39,70 |
| 121 | | 72808920 | GIUNTO CROCIERA FORO INT. D.26 | Joint cross - Joint croisillon - Kreuzbindung - Junto cruce | | | 27,20 |
| | | | | | | | |
| | | | | | | | |
| | | | | | | | |
| | | | | | | | |
| | | | | | | | |
| | | | | | | | |
| | | | | | | | |
| | | | | | | | |
| | | | | | | | |



73300810

Revisione 05

Mod. iF 30-40